

Bienvenue Welkom
Bienvenida Willkommen
Benvenuto Benvenuto
uto Welcome Bienvenue



Willkommen Welkom



WELCOME GUIDE
FOR **INTERNATIONAL**
STUDENTS
OF HAINAUT



CONTENT

03 WORD OF THE EDITOR

04 BELGIUM IN A NUTSHELL

05 EDUCATION

- 05 Higher education in the Wallonia-Brussels Federation
- 06 The Pôle hainuyer, a higher education centre in Hainaut
- 07 Studying at an institution of the Pôle hainuyer
- 08 International Relations departments
- 10 Academic calendar
- 11 French language courses
- 11 Libraries
- 12 Student life
- 14 Culture and Sports

16 USEFUL INFORMATION

- 16 Administrative procedures
- 18 Transport
- 20 Accommodation
- 22 Health
- 24 Day-to-day life

25 MAPS

- 25 Tournai
- 26 Mons
- 27 Charleroi
- 28 Hainaut
- 30 Details

36 CONTACTS



WORD OF THE EDITOR

Dear student,

You have chosen to spend your mobility for studies or traineeship in a higher education institution member of the Pôle hainuyer. The latter is a structure which gather structure which gather higher education institutions of the Province of Hainaut in Belgium.

We are very happy to welcome you here and we will do our best to ensure your mobility experience is as profitable and pleasant as possible.

This guide you are holding now provides useful information and advice that will make it easier to prepare your journey and ensure your stay runs smoothly.

You are now ready to discover a new living environment. Many questions probably play on your mind: who to get in touch with upon your arrival... and before your departure? How can you travel to the host city by public transport? How should you book your accommodation? What kind of insurance do you need to subscribe? We will try to answer those questions to the best of our abilities in this document.

You will find a check list with all you need to do before, during and after your stay, an excellent way to make sure that only good surprises will await you here!

This guide also includes tips that will help you to discover a few cities of Hainaut. Read it before you leave and take it with you!

Looking forward to greeting you in person, we wish you a happy reading and welcome you already.

THE CO-CHAIRS OF THE PÔLE HAINUYER:

Calogero CONTI
Rector of Mons university

Jean-Luc VREUX
Director-Chairman of the HELHa



BELGIUM IN A NUTSHELL

Bordering on The Netherlands in the north, Germany and the Grand Duchy of Luxembourg in the east, France in the south and the North Sea in the west, Belgium covers a surface of 30,528 km² with a population of some 11,000,000 inhabitants.

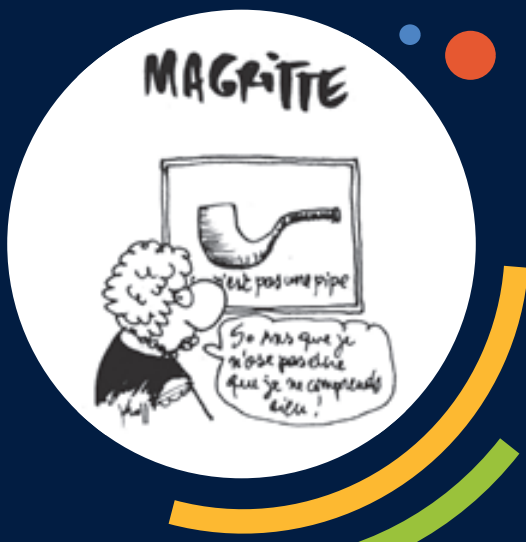
As a founding member of the European Union (EU) Belgium welcomes, in its capital Brussels, the headquarters of many European (including the European commission and the European parliament) and international organisations (such as the headquarters of the North Atlantic Treaty Organisation NATO).

Belgium is a constitutional and parliamentary monarchy that has been independent in 1830. His present King is Philip I. As a federal state, it includes three Regions (the Walloon region, the Flemish region and the Brussels-Capital region) and three Communities (the French community also called Wallonia-Brussels Federation, the Flemish community and the German-speaking community).

Dutch is spoken in the Flemish region, the northern part of the country whereas French is spoken in the Walloon region, in the south. In eastern districts, the main language is German. In Brussels, the capital of Europe, 80% of the 1,300,000 inhabitants of the city are French-speaking. English is also used by many inhabitants of the country. Belgium is composed of ten provinces including the province of Hainaut, where you will be welcomed. Located in the Walloon region, the capital of the province of Hainaut is Mons and the major other cities are Charleroi, La Louvière, Mouscron and Tournai.

Belgians whose names are well-known abroad include the famous singer-songwriters Jacques Brel and Stromae; the actors Benoît Poelvoorde and Marie Gillain, the authors Amélie Nothomb, Georges Simenon (police captain Maigret), Maurice Maeterlinck (Nobel Prize in Literature 1911); the fathers of comics: Franquin (Gaston Lagaffe), Hergé (Tintin creator), Morris (Lucky Luke), Peyo (the Smurfs); the drawer and caricaturist Pierre Kroll (who illustrated some pages of this guide); the directors Chantal Akerman, Jaco Van Dormael, Jean-Pierre and Luc Dardenne; the painters James Ensor, René Magritte and the tennis players, Justine Henin and Kim Clijsters.

Belgium is also the country of chocolate, beer and of course mussels served with French fries! It is a friendly country that offers plenty of historic, artistic, gastronomic, architectural and natural treasures that we invite you to discover.





Higher education in the Wallonia-Brussels Federation

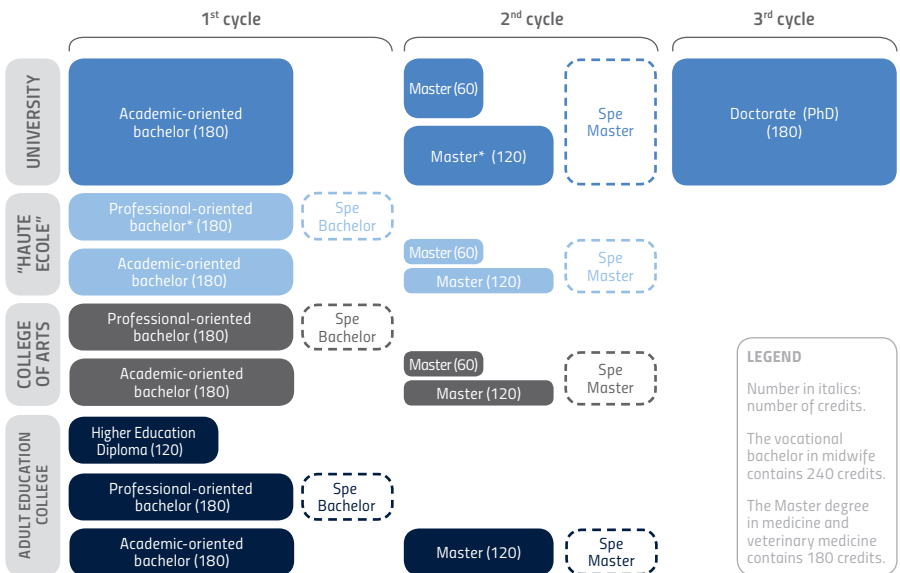
The European area for higher education (EEES) that emerged from the Bologna process was created to guarantee coherent, comparable and compatible higher education systems.

In the Wallonia-Brussels Federation (FWB), the higher education institutions are an integral part of the EEES. They unite Universities, "Haute Ecole" (HE), Colleges of Arts (ESA) and Adult education Colleges (EPS) and issue diplomas of Higher Education, academic-oriented Bachelor and professional-oriented Bachelor, Master and Doctorate corresponding to three study cycles.

The European Credit Transfer System (ECTS) is in force and therefore promotes the student's mobility.

An ECTS is an overall working time unit of the student corresponding to 30 hours of learning activities (lectures, practice, traineeship, personal study and research).

The educational offer of the FWB is diverse and the issued diplomas are recognised not only in the EEES but also worldwide.



The Pôle hainuyer, a centre of higher education

The Pôle hainuyer is one of the five academic centres created by a decree that establishes the landscape of higher education in the Wallonia-Brussels Federation and the academic organisation of the studies. Located in the province of Hainaut, the Pôle hainuyer is composed of **37 higher education institutions**, i.e.:



28 Adult education Colleges

Its mission

The Pôle hainuyer, like other academic centres, is a place of concertation and dialogue between its member institutions. Its main mission is to promote and support all kinds of co-operation, and to encourage teamwork to provide quality services to students.

International students enjoy the same services as regular students

- Information, orientation and re-orientation services ;
- Social support services;
- Access to equipment and new technologies (auditoriums, various labs, etc.);
- Physical and virtual libraries;
- Remedial activities services;
- National and international mobility opportunities as well as inside the Pôle;
- Accommodation and catering facilities;
- Sports and leisure activities, cultural and student associations, etc.



The offer, in the province of Hainaut, covers 20 fields of study

- Architecture and urban planning
- Performing arts and broadcasting and communication technology
- Arts and art sciences
- Plastic, visual and spatial arts
- Information and communication
- Languages, literatures and translation studies
- Music
- Philosophy
- Sciences
- Agriculture and bioengineering
- Biomedicine and pharmacy
- Motor sciences
- Public health sciences
- Engineering and technology
- Economics and management
- Law
- Medicine
- Political and social sciences
- Psychology and education
- Theatre and drama

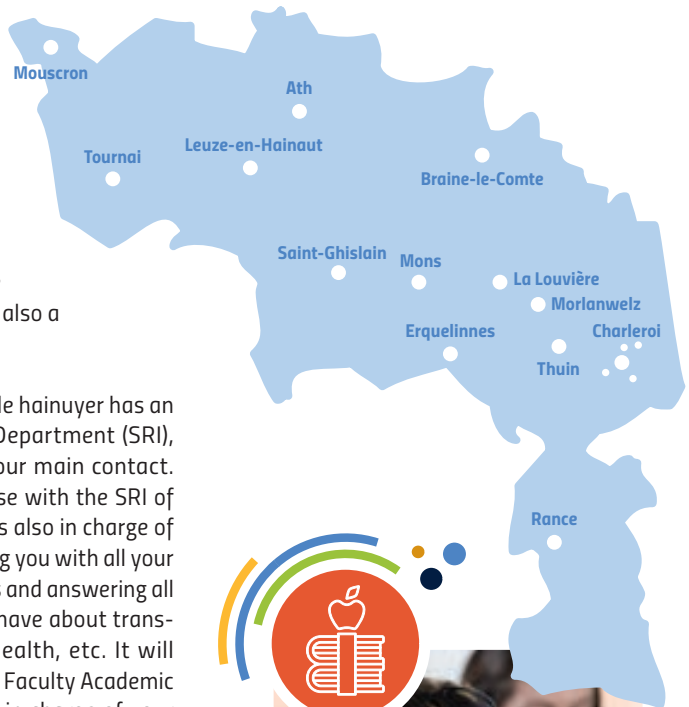
Some institutions also organize programs in other provinces. Find more information on the websites of UCL, ULB and HELHA.

Studying at an institution of the Pôle hainuyer

Have you decided to complete part of your studies in Belgium, and chosen to follow courses in the province of Hainaut? Be assured that everything will be done to ensure your stay will not only be an academic success, but also a personal one.

Each institution of the Pôle hainuyer has an International Relations Department (SRI), or similar, that will be your main contact. That department will liaise with the SRI of your home institution. It is also in charge of welcoming you, supporting you with all your administrative procedures and answering all the questions you might have about transport, accommodation, health, etc. It will also introduce you to your Faculty Academic Co-ordinator who will be in charge of your academic supervision, the validation of your Learning Agreement and answer any question you might have.

Upon arrival, get in touch right away with both your host institution SRI (see details on the next pages) and your Academic Co-ordinator. In adult education there is no actual SRI. For any information please contact the institution in question (see www.polehainuyer.be > Partner institutions > Adult education Colleges).



International Relations Departments

Université de Mons



International Relations office

Place du parc, 20 • 7000 Mons

Visits:

Place Warocqué, 17
(office 034L)
7000 Mons

Virginie Dufrancatel

“incoming” students
+32 (0)65 37 37 43
incoming.relint@umons.ac.be

www.umons.ac.be



Université catholique de Louvain



Student Mobility Office Mons campus

Chaussée de Binche, 151
(I. building) • 7000 Mons

Magaly Duquesne

+32 (0)65 32 34 46
international@
uclouvain-mons.be

www.uclouvain.be/mons

Student Mobility Office Tournai campus

Chaussée de Tournai, 7
7520 Ramegnies-Chin
+32 (0)69 25 03 22
loci-tournai@uclouvain.be

www.uclouvain.be/tournai



Université libre de Bruxelles



Student Mobility Office

Campus du Solbosh
ULB CP183
Avenue F.D. Roosevelt, 50
1050 Bruxelles
+32 (0)2 650 42 23
mobilité@ulb.ac.be

www.ulb.ac.be



Another contact in your host institution:

Your host institution study secretariat acts as intermediary between the teachers and their students.



Regularly consult the notice board that displays lots of information (course schedules, rooms, etc.).

You will find your host institution's secretariat details on the Pôle hainuyer's institutions websites (see contacts page 32).

Haute Ecole en Hainaut



International Relations office

Rue Pierre-Joseph Duménil, 4
7000 Mons

Laurence Baras

+32 (0)498 11 46 64
+32 (0)65 34 79 83
laurence.baras@heh.be

www.heh.be



Haute Ecole Louvain en Hainaut



International Relations department

Chaussée de Binche, 159
7000 Mons

Guy Philippron

+32 (0)65 40 41 66
international@helha.be

www.helha.be



Haute Ecole Provinciale de Hainaut – Condorcet



International Relations Office

Boulevard Roullier, 1
6000 Charleroi

Anne Delannay

+32 (0)71 53 13 11
anne.delannay@condorcet.be

www.condorcet.be



ARTS²



International Relations

Rue de Nimy, 7 • 7000 Mons

Kurt Engelen

+32 (0)65 34 73 77
erasmus@artsaucarre.be

www.artsaucarre.be



Académie des Beaux- Arts de Tournai



International Relations

Rue de l'Hôpital Notre-Dame, 14
7500 Tournai

Thomas Boucart

+32 (0)497 50 20 87
+32 (0)69 84 12 63
thomas.boucart@skynet.be

www.actournai.be



ESA Saint-Luc Tournai



International Relations

Chaussée de Tournai, 7
7520 Ramegnies-Chin

Xavier Dochy

+32 (0)69 25 03 66
direction-esa@saintluctournai.be

www.stluc-sup-tournai.be



Adult education Colleges

Contact the Adult education Colleges concerned (see www.polehainuyer.be
> Partner institutions > Adult education Colleges).





Academic calendar

The academic year is organised in 3 terms:

- The 1st term **from mid September to end of January;**
- The 2nd term runs **from February to end of June;**
- The 3rd term includes **the summer holidays and the second exam session.**

Exams are organised at the end of each term: in January and late May-early June. A second exam session stretches from mid August to the start of September, which enables the students to resit exams where they did not achieve satisfactory results. Special exam periods and/or modalities can be granted to the international students. Find out about those possibilities at the start of the term from the SRI of your host institution (see details pages 8-9).


The threshold to pass is set to 10/20 by Education Unit.

The Transcript of Records – TOR will be presented to your home institution and you will receive a copy in the weeks after the end of your stay.

 ACADEMIC CALENDAR

 ANNUAL HOLIDAYS

The academic calendar does not apply to Adult education Colleges, find out more from the Adult education Colleges concerned (see www.polehainuyer.be).


 14.09
2016 START OF THE ACADEMIC YEAR

 16.09
2016 WELCOME DAY OF "INCOMING" STUDENTS

 27.09
2016 FESTIVAL OF THE FRENCH COMMUNITY

 01.11
2016 ALL SAINTS


 11.11
2016 ARMISTICE

 24.12
2016 WINTER HOLIDAYS
(24.12.2016 > 06.01.2017)

 06.01
2017 EXAMS
(06.01.2017 > 28.01.2017)

 29.01
2017 BREAK
(30.01.2017 > 05.02.2017)

 06.02
2017 RE-START OF LEARNING ACTIVITIES

 03.04
2017 SPRING BREAK
(03.04.2017 > 16.04.2017)

 01.05
2017 LABOUR DAY

 25.05
2017 ASCENSION

 05.06
2017 PENTECOST

 22.05
2017 EXAMS
(22.05.2017 > 07.07.2017)

 01.07
2017 SUMMER HOLIDAYS

 14.08
2017 EXAMS
(14.08.2017 > 09.09.2017)

French language

French is the main teaching language within the institutions of the Pôle hainuyer. It is therefore essential that students sufficiently master the French language, both orally and in writing, to succeed in their learning activities. Some institutions offer intensive French as foreign language courses (FLE) at the start of each academic year.

Those courses are **free of charge** for international students.

If you wish to benefit from those French language courses, please inform the International Relations Service of your institution or your international co-ordinator (see details pages 8-9).

Libraries

All the libraries of the institutions of the Pôle hainuyer represent more than one million of resources available to borrow or to consult: novels, technical books and magazines.

Featuring new information and communication technology, those libraries provide the public with digital workspaces and WIFI access for all.

They also have extremely rich and diverse heritage funds: thousands of antique prints, and several hundreds of manuscripts with the oldest one dating back to the 10th century. There is also a large collection of local newspapers with many of them dating back to the 19th century.

You will find all the information about those libraries on the PH institutions' websites (see contacts page 32).



THE DIGITAL CAMPUSES

Don't forget to consult the digital platform proposed by your host institution. It includes all the educational and administrative information easing relation between teachers and students (digital announcements, online courses, Learning Agreement for Traineeship, etc.).

Student life

Student life is not limited to lectures, practice or labs. The institutions of the Pôle hainuyer provide numerous leisure and entertainment opportunities: sports or cultural activities, various associations...



SPORTS AND CULTURE

In that field, the institutions of the Pôle hainuyer have a double objective: making sports and culture available to everyone by organising sports and cultural activities at affordable prices, and creating bonds between all the students, irrespective of their institution, their campus or their study field.

If you wish to practise sports, music, theatre or take part in various cultural excursions in a convivial atmosphere, please refer to the website of your host institution (see contacts page 32) or look for information from the contact persons indicated on pages 14-15.



ORCHESTRA AND CHOIR

Are you a keen music fan, do you play an instrument or do you like to sing a few notes from time to time, with or without experience? Join one of the initiatives proposed by our institutions.





ASSOCIATIONS

The students of the institutions of the Pôle hainuyer are grouped in associations. The latter differ depending on the institution, campus or Faculty/Category in which students are enrolled in. They communicate via websites, forums or social networks. Check the website of your host institution to find out what you can do (see contacts page 32).

Among these associations, the Erasmus Student Network (ESN) is an association that focuses on helping and integrating Erasmus students, in particular through the organisation of parties and various extra-academic activities. If you wish to find out more, please contact the associations Erasmons (erasmus.umons@gmail.com) and ESN Mons'ters (esn.monsters@uclouvain-mons.be).

TOURISM

The Office de Promotion du Tourisme (OPT) of Wallonia and Brussels' mission is to help you discover and appreciate the charms of our region. Don't hesitate to visit their website to find more information on the city you are interested in (www.opt.be).

Culture and Sports units

Université de Mons



Culture and Sport Unit

cultureetsport@umons.ac.be

Perrine Dagonnier

+32 (0)65 37 37 06

perrine.dagonnier@umons.ac.be

Carla Nota

+32 (0)65 37 37 20

carla.nota@umons.ac.be



Université catholique de Louvain



Administration of students affairs – Mons campus

Maxime Lahou

+32 (0)65 32 32 87

affaires.etudiantes
@uclouvain-mons.be

Administration of students affairs – Tournai campus

+32 (0)69 25 03 22

loci-tournai@uclouvain.be



Université libre de Bruxelles



ULB Culture

+32 (0)2 650 40 62

culture@ulb.ac.be

www.ulb.ac.be/culture

ULB Sports

+32 (0)2 650 21 78

ulbsports@admin.ulb.ac.be



Haute Ecole en Hainaut



Cultural activities

Céline Pourbaix

+32 (0)471 78 68 42

celine.pourbaix@heh.be



Sport activities

Krystel Bavier

+32 (0)476 29 69 06

krystel.bavier@heh.be



Haute Ecole Louvain en Hainaut



Culture and Sport Unit

Paul Lodewick

+32 (0)65 40 41 42

paul.lodewick@helha.be



Haute Ecole Provinciale de Hainaut – Condorcet



Culture commission

Patricia Hosselet

+32 (0)65 40 12 26

patricia.hosselet@condorcet.be



Sport commission

Yannick Miserque

+32 (0)478 59 59 50

yannick.miserque@condorcet.be



ARTS²



Culture and Sport Unit

Gwénaëlle L'hoste

+32 (0)65 35 60 87

communication@artsaucarre.be

ARTS²

ÉCOLE SUPÉRIEURE DES ARTS
ACADEMY OF ARTS

ACT



Culture and Sport Unit

Thomas Boucart

+32 (0)497 50 20 87

thomas.boucart@skynet.be



ESA Saint-Luc Tournai



Culture and Sport Unit

Xavier Dochy

+32 (0)69 25 03 66

direction-esa@saintluctournai.be



ESA Saint-Luc Tournai
www.esa-tournai.be

Adult education Colleges

Cultural and sports news is available on the websites of the Adult education Colleges (see www.polehainuyer.be > Partner institutions > Adult education Colleges).





USEFUL INFORMATION

Administrative procedures

Before departing to your host institution, you will need to comply with various formalities. We recommend you to consult the website of your host institution (see contacts page 32) to know them thoroughly. These are some of the essential tasks to carry out for your mobility.



Before your departure

- Draw up a first **Learning Agreement** with the academic co-ordinator of your home institution.
- Send a first e-mail contact with the **International Relations Department (SRI)** of your host institution (see details pages 8-9).
- Download the **application form** from your host institution's website (see contacts page 32).
- Fill in your **application form**, sign it, have it signed by the Academic co-ordinator of your home institution and send it to your host institution.
- Make sure to find **accommodation**. Do not hesitate to ask for advice from your host institution that can help you.
- Make sure your **identity card and/or passport** is valid.
- Check whether you dispose of an internationally valid **healthcare insurance**. Be aware that a valid healthcare insurance is mandatory in Belgium!
- Check whether your **credit/debit card** is accepted in Belgium.
- Check whether the debit limit of your **bank account** is sufficient.

Upon your arrival

- Go to the SRI of your host institution to complete your **enrolment file**.
- Register with the **'foreigners' department of the municipality** where you stay. You will have to fill in a document entitled **"Annex 33"** in 4 copies. You will have to provide 4 ID photos, a school certificate, an Erasmus certificate, a valid identification (identity card or passport) and, depending on the municipality, you might have to pay a small administrative fee amounting to a few euros. You will be given a copy of that Annex 33, which you will need to keep with your ID documents for the duration of your stay!
- Ask the SRI to sign the first part of the **"Arrival form"**.

Before your departure

- Ask the SRI to sign the second part of your **"Departure form"**.
- Ask the SRI of your host institution and home institution to find out whether other **administrative return documents** must be filled in.
- Inform the **municipal administration of the city** your reside in and your health insurance of your departure.



GOOD TO KNOW

The report of your marks obtained for the exams organised by your host institution (Transcript of Records) guarantees the recognition of ECTS credits and ensures the transparency of the marking system. This document will be sent automatically to the SRI of your home institution as soon as your exams are evaluated (end January, end June or end September). You will receive the summary of your marks within five weeks after your departure.



Transport



AIRPORTS

The 2 major airports in Belgium are:

- **Brussels Airport**

The railway station is located at level -1 of the airport. The Brussels Airport Express train runs four times per hour to the stations of Bruxelles Nord, Bruxelles Central and Bruxelles Midi. From there you can take another train to Mons, Charleroi, Tournai, etc.

www.brusselsairport.be

- **The airport of Charleroi-Brussels Sud is located in Gosselies (Charleroi).**

At Charleroi airport, you can buy a single ticket 'to any Belgian station' from the available ticket machines. That ticket combines the TEC bus journey (from the airport to the railway station of Charleroi-Sud) and the train journey (to any Belgian railway station). Two ticket vending machines are located outside the airport at gate 2.

www.charleroi-airport.com



RAILWAYS

Besides a single or return ticket, the Société Nationale des Chemins de Fer belges (Belgian National Railway Company-SNCB/MIVB) also offers other travel tickets:

- **Go Pass**

Go Pass offers young people, up to 26 years old, 10 single journeys to any Belgian railway station for a little more than 50€. It is valid for one year and can be used by several people.

- **Rail Pass**

Rail Pass offers the same service as the Go Pass but without any age restrictions and at a price of approximately 75€.

- **Interrail Card**

It is also possible to travel without restriction throughout Europe during one month with the Interrail card.

You don't need to validate the ticket on the platform, the ticket inspector will do it on board. Please note that all Belgian trains are no-smoking.

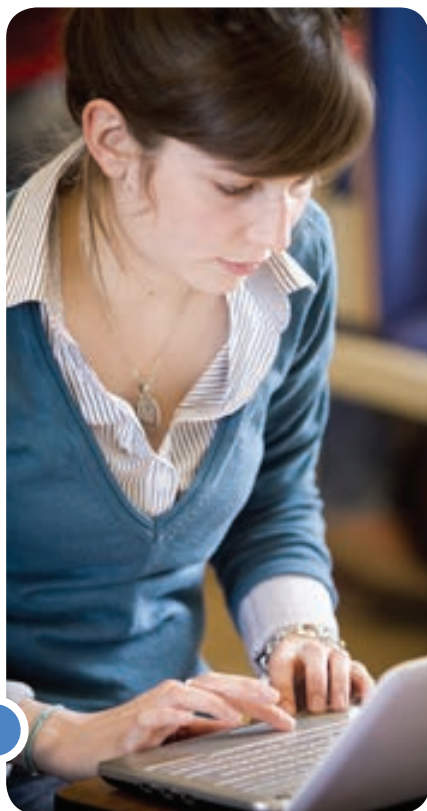
To discover all the SNCB offers, to check the train schedules and to buy tickets online, visit www.belgianrail.be or find out directly at the station.



BUS

The TEC public transport company (Transport en Commun) offers a large bus network throughout Wallonia. You can choose your ticket depending on your travel frequency (single ticket, card or season ticket).

Please visit www.infotec.be for more information.



GOOD TO KNOW

In Mons, you can travel for free within the city limits from Monday to Saturday, from 7 am to 9 pm, with the Intramuros buses that operate in the city centre.
(6€/20 rides)

In Charleroi, you can also take the underground. Consult www.infotec.be for underground zones, fares and conditions.



Accommodation

There are two types of student accommodation: accommodation offered by **institutions** and **private lodgings**.

Warning: we advise you that you start looking for accommodation as soon as possible! If you wish to benefit from accommodation at one of the institutions of the Pôle hainuyer, consult its website to find out about the procedures and above all, the deadlines for your application (see contacts page 32). If you wish to find private accommodation, you can ask for advice from the SRI of your host institution (see details pages 8-9).

In both cases, you should ideally begin to look for accommodation around March for the following academic year.



Institution accommodation

The catalogue with all the information about accommodation offered by institutions and lists with private accommodation are usually available at your host institution's SRI.

The rooms (also called "kots"), located in student residences can be single or double. They are furnished and often have a shower. Kitchens usually are shared.

The monthly rent for an accommodation in an institution is approximately 270€, including provision for heating and water. A one month deposit is required.

Private accommodation

Private student accommodation in the city usually consists of rooms (kots) that can be either located in the landlord's house (kots in private homes) or "studios". Private kots are similar to those provided by the institutions. You can also rent a "studio", furnished or not, where you will have a private shower and kitchen. Rent is usually more expensive for studios.

Usually, rental periods are either 10 or 12 months. However, it is sometimes possible to reach an agreement with the landlord for a shorter rental period. The average monthly rent for a furnished kot is approximately 300€ without charges (renting costs for electricity, water and heating).



Youth hostels

Youth hostels are an ideal solution for a few nights.

.....

“Un toit, deux âges”

An alternative to accommodation offered by institutions or individuals: inter-generational accommodation. If you wish to combine economic concerns and conviviality, contact the association “Un toit, deux âges” (One roof, two ages”).

Useful links

Here are a few websites where you can find ads, some information and useful tips:

- www.inforjeunes.be
- www.student.be
- www.kitkot.be
- www.kotplanet.be
- www.1toit2ages.be
- www.aubergesdejeunesse.com

Health



Insurance

In Belgium, individual healthcare insurance is mandatory. You must be insured in all cases.

If you come from a country of the European Economic Space, EEE (EU + Iceland, Norway, Lichtenstein and Switzerland), you are insured by your national insurance system. Upon your request your healthcare insurance company in your home country will provide you with a European Health Insurance Card (CEAM). This is valid for one year maximum and will enable you to become member of a so-called 'mutuelle' in Belgium, in order to benefit from the reimbursement of medical expenses under the same conditions that apply to Belgian residents.

Note that the same principles apply to students from countries which have signed a

bilateral agreement with Belgium on healthcare insurance. Find out from your healthcare insurance company in your home country or a 'mutuelle' in Belgium. An 'all inclusive' mobility insurance can also be subscribed with a private insurance company to obtain a refund of all incurred expenses.

If you come from a country outside the EEE, you must have a healthcare insurance policy to reside in Belgium. Some insurance companies offer additional policies that cover hospitalisation and other medical expenses, repatriation, illness or accidents that occur during your stay abroad.

Furthermore, international students can sometimes benefit from a collective insurance policy underwritten by their home or host institution to cover accident occurring



during student activities. Find out from the SRI of your home or host institution (see details pages 8-9) whether it is possible and don't forget to check what you are covered for (accidents, repatriation, civil liability, etc.) as well as the intervention conditions (on the way to the institution, during excursions it organises and in case of participation in educational activities organised on its premises).

EMERGENCY NUMBERS

112

Emergency number

This number can be called even without card or credit

101

Police

www.police.be

100

Emergency services

Ambulance and fire brigade

105

Red Cross

Help and intervention in case of accident

1733

(paid for service)

Doctors on call

To know the doctor on call in your region

070 245 245

Anti poison centre

Poisoning and burns
www.poisoncentre.be

Pharmacies on call

To know the pharmacy on call of your region, enter your postcode on www.pharmacie.be



Day-to-day life

Money

The Euro (€) is the currency used in Belgium. Numerous ATMs are at your disposal (Bancontact/Mister Cash, Visa, Mastercard, Maestro, etc.). They generally work with most credit and debit cards.



If you open a bank account in Belgium upon your arrival, you will need to submit following documents:

- Identity card or passport,
- Your kot/studio's address,
- A Social Security certificate or a host institution's enrolment certificate.

Waste management

In Belgium household waste and other waste is subject to **selective sorting** and collected regularly. In order to know about the collection schedule (dates and times to put your bins outside) in your region, download the mobile application "**Recycle!**" or consult the websites of the organisations below :

- Braine-le-Comte : www.ibw.be
- Charleroi, Gosselies, Fleurus, Marcinelle, Loverval : www.icdi.be
- La Louvière, Mons, Morlanwelz, Saint-Ghislain : www.hygea.be
- Ath, Leuze-en-Hainaut, Mouscron et Tournai ; ainsi que Thuin, Sivry-Rance : www.ipalle.be

Telephone

The major mobile telephone companies in Belgium are Proximus, Mobistar and Base.



You can easily buy a SIM card with a local call number and small communication credit in a mobile phone shop. The cards to reload your communication credit can be bought in the same shops, but also in supermarkets, newsagents, etc.

Shops and services

There are many shops and services (shops, banks, post offices, cybercafés, launderettes etc.) in your host city. Usual opening times are from 9 am to 6 pm, from Monday till Friday or Saturday. Shops and services are closed on Sundays but night shops can help you 24/7.

Catering

The institutions of the Pôle hainuyer provide numerous catering facilities. Depending on the campus, sandwiches and/or hot meals are available at democratic prices. To know the available restaurants and cafeterias in your host institution, visit its website (see contacts page 32). Please note that numerous snack-bars and restaurants are also available in the cities around the campuses.



Tournai



Université catholique de Louvain



- 1** Chaussée de Tournai, 7 • 7520 Tournai
RECEPTION, INFORMATION AND REGISTRATION •
LOCI - FACULTY OF ARCHITECTURE, ARCHITECTURAL
ENGINEERING AND URBAN PLANNING

Haute Ecole Provinciale de Hainaut-Condorcet



- 2** Rue Paul Pastur, 73 • 7500 Tournai
PARAMEDICAL CATEGORY
- 3** Rue Paul Pastur, 2 • 7500 Tournai
TECHNICAL CATEGORY
- 4** Rue du Progrès, 13 • 7503 Froyennes (Negundo)
ECONOMIC CATEGORY

Haute Ecole Louvain en Hainaut



- 5** Rue de l'Ecorcherie, 16-20 • 7500 Tournai
SOCIAL CATEGORY
- 6** Quai des Salines, 28 • 7500 Tournai
PARAMEDICAL CATEGORY
- 7** Rue Frinoise, 12 • 7500 Tournai
TECHNICAL CATEGORY

Haute Ecole en Hainaut



- 8** Rue du Chambge, 23 • 7500 Tournai
ECONOMIC CAMPUS
- 9** Rue des Carmes, 19b • 7500 Tournai
EDUCATION CAMPUS • SOCIAL CAMPUS

Académie des Beaux-Arts de Tournai



- 10** Rue de l'Hôpital Notre-Dame, 14 • 7500 Tournai
RECEPTION, INFORMATION AND REGISTRATION • PLASTIC
AND VISUAL ARTS

ESA Saint-Luc Tournai



- 11** Chaussée de Tournai, 7
7520 Ramegnies-Chin
PLASTIC AND VISUAL ARTS

Enseignement de Promotion sociale (Adult education)



- 12** IEPSCF DE TOURNAI-ANTOING-TEMPLEUVE
Rue Saint-Brice, 53 • 7500 Tournai

Mons



Université de Mons



- 1** Place Warocqué, 17 • 7000 Mons
RECEPTION, INFORMATION AND REGISTRATION • SCHOOL OF HUMAN AND SOCIAL SCIENCES • LAW SCHOOL • FACULTY OF PSYCHOLOGY AND EDUCATION • WAROCQUE SCHOOL OF BUSINESS AND ECONOMICS
- 2** Rue d'Havré, 88 • 7000 Mons
FACULTY OF ARCHITECTURE AND URBAN PLANNING
- 3** Avenue du Champs de Mars (Plaine de Nimy) 7000 Mons
FACULTY OF MEDICINE AND PHARMACY • FACULTY OF SCIENCE • FACULTY OF TRANSLATION AND INTERPRETATION - EII
- 4** Rue de Houdain, 9 • 7000 Mons
FACULTY OF ENGINEERING
- 5** Place du Parc • 7000 Mons
RESEARCH INSTITUTE FOR LANGUAGE SCIENCE AND TECHNOLOGY

Université catholique de Louvain



- 6** Chaussée de Binche, 151 • 7000 Mons
FACULTY OF ECONOMIC, SOCIAL, POLITICAL SCIENCES AND COMMUNICATION • LOUVAIN SCHOOL OF MANAGEMENT (LSM)

Haute Ecole Provinciale de Hainaut-Condorcet



- 7** Chemin du Champ de Mars, 15 • 7000 Mons
ECONOMIC CATEGORY • PARAMEDICAL CATEGORY • EDUCATION CATEGORY

Haute Ecole Louvain en Hainaut



- 8** Chaussée de Binche, 159 • 7000 Mons
APPLIED ARTS • ECONOMIC CATEGORY • EDUCATION CATEGORY • SOCIAL CATEGORY • TECHNICAL CATEGORY

Haute Ecole en Hainaut



- 9** Rue Pierre-Joseph Duménil, 4 • 7000 Mons
RECEPTION, INFORMATION AND REGISTRATION
- 10** Avenue Victor Maistriau, 13 • 7000 Mons
SOCIAL CAMPUS
- 11** Avenue Victor Maistriau, 8a • 7000 Mons
TECHNICAL CAMPUS
- 12** Boulevard Albert-Elisabeth, 2 • 7000 Mons
EDUCATION CAMPUS

ARTS²



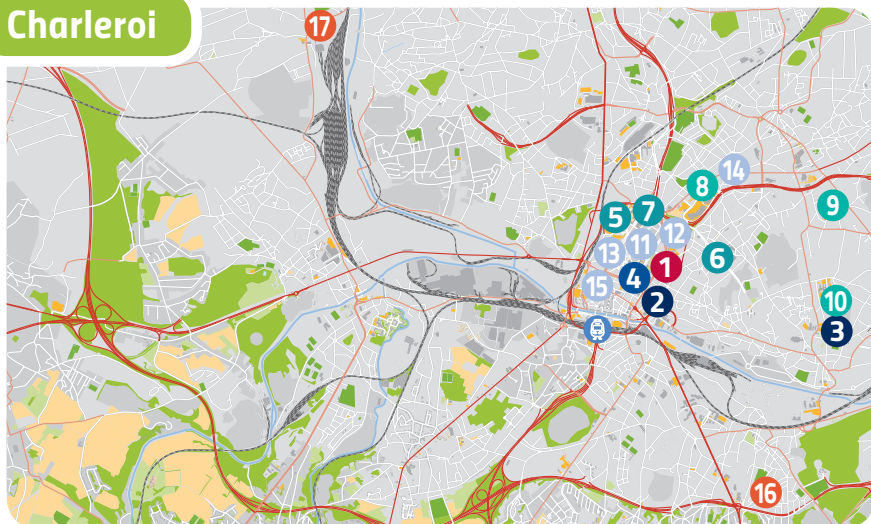
- 13** Rue des Soeurs Noires, 4a • 7000 Mons
PLASTIC AND VISUAL ARTS (ACADEMY OF ARTS) • THEATRE (ROYAL CONSERVATOIRE)
- 14** Rue de Nimy, 7 • 7000 Mons
SECRETARIAT • MUSIC (ROYAL CONSERVATOIRE)

Enseignement de Promotion sociale (Adult education)



- 15** PROMSOC MONS-BORINAGE
Avenue du Tir, 10 • 7000 Mons
- 16** INSTITUT REINE ASTRID DE MONS (IRAM)
Rue de Saint-Luc, 3 • 7000 Mons
Chaussée de Binche, 158 • 7000 Mons
- 17** IEPSCF DE JEMAPPES – QUIÉVRAIN
Avenue Roi Albert, 643 • 7012 Jemappes

Charleroi



Université de Mons



- 1** Boulevard Joseph II, 38-42 • 6000 Charleroi
RECEPTION, INFORMATION AND REGISTRATION
• FACULTY OF PSYCHOLOGY AND EDUCATION •
FACULTY OF SCIENCE • FACULTY OF ENGINEERING •
WAROCQUE SCHOOL OF BUSINESS AND ECONOMICS

Université catholique de Louvain



- 2** Boulevard Devreux, 6 • 6000 Charleroi
RECEPTION, INFORMATION
- 3** Rue Trieu Kaisin, 134
6061 Montignies-sur-Sambre
FACULTY OF ECONOMIC, SOCIAL, POLITICAL SCIENCES
AND COMMUNICATION • LOUVAIN SCHOOL
OF MANAGEMENT (LSM)

Université libre de Bruxelles



- 4** Boulevard E. Solvay 31 • 6000 Charleroi
DEP. OF LABOUR AND SOCIAL SCIENCES • MASTER IN
LABOUR SCIENCES

Haute Ecole Provinciale de Hainaut-Condorcet



- 5** Boulevard Solvay, 31 • 6000 Charleroi
TECHNICAL CATEGORY
- 6** Rue de l'Espérance, 95
6061 Montignies-sur-Sambre
PARAMEDICAL CATEGORY
- 7** Square Hiernaux, 2 • 6000 Charleroi
ECONOMIC CATEGORY

Haute Ecole Louvain en Hainaut



- 8** Grand'Rue, 185 • 6000 Charleroi
TECHNICAL CATEGORY
- 9** Rue de l'Hôpital, 27 • 6060 Gilly
PARAMEDICAL CATEGORY
- 10** Rue Trieu Kaisin, 134
6061 Montignies-sur-Sambre
ECONOMIC CATEGORY • SOCIAL CATEGORY •
PARAMEDICAL CATEGORY

Enseignement de Promotion sociale (Adult education)



- 11** INSTITUT PROVINCIAL SUPÉRIEUR
DES SCIENCES SOCIALES ET PÉDAGOGIQUES
Boulevard Gustave Rouiller, 1 • 6000 Charleroi
- 12** UNIVERSITÉ DU TRAVAIL – INSTITUT
D'ENSEIGNEMENT TECHNIQUE COMMERCIAL
Square Hiernaux, 2 • 6000 Charleroi
- 13** INSTITUT PROVINCIAL SUPÉRIEUR INDUSTRIEL
DU HAINAUT
Boulevard Solvay, 31 • 6000 Charleroi
- 14** COLLÈGE TECHNIQUE "AUMÔNIERS DU TRAVAIL"
Grand Rue, 185 • 6000 Charleroi
- 15** ÉCOLE DES FEMMES PRÉVOYANTES SOCIALISTES (FPS)
Avenue des Alliés, 2 • 6000 Charleroi
- 16** COURS INDUSTRIELS ET COMMERCIAUX DE COUILLET
Rue des Lilas, 3 • 6010 Couillet
- 17** CENTRE D'ENSEIGNEMENT SUPÉRIEUR POUR ADULTES (CESA)
Rue de Courcelles, 10 • 6044 Roux



● Université de Mons



● Université catholique de Louvain



● Université libre de Bruxelles



● Haute Ecole Louvain en Hainaut



● Haute Ecole Provinciale de Hainaut-Condorcet



● Haute Ecole en Hainaut



● Académie des Beaux-Arts de Tournai



● ARTS²

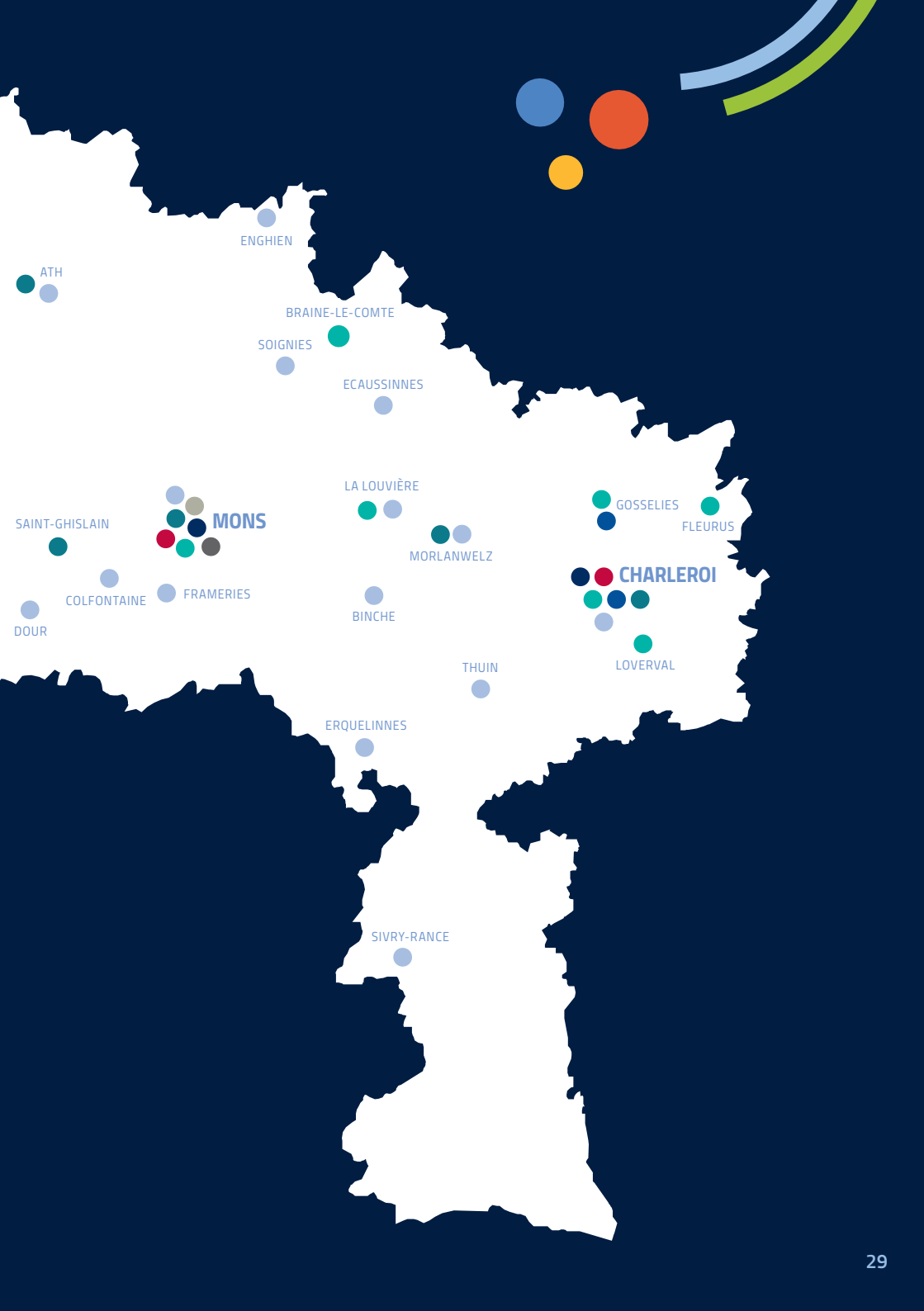


● ESA Saint-Luc Tournai



● Enseignement de Promotion sociale (Adult education)





ENGHIEN

ATH

BRAINE-LE-COMTE

SOIGNIES

ECAUSSINNES

LA LOUVIÈRE

MORLANWELZ

GOSSELIES

FLEURUS

SAINT-GHISLAIN

MONS

CHARLEROI

DOUR

COLFONTAINE

FRAMERIES

BINCHE

THUIN

LOVERVAL

ERQUELINNES

SIVRY-RANCE



Université de Mons



Boulevard Joseph II, 38-42 • 6000 Charleroi

RECEPTION, INFORMATION AND REGISTRATION
FACULTY OF PSYCHOLOGY AND EDUCATION
FACULTY OF SCIENCE
FACULTY OF ENGINEERING
WAROCQUE SCHOOL OF BUSINESS AND ECONOMICS

Place Warocqué, 17 • 7000 Mons

RECEPTION, INFORMATION AND REGISTRATION
SCHOOL OF HUMAN AND SOCIAL SCIENCES
LAW SCHOOL
FACULTY OF PSYCHOLOGY AND EDUCATION
WAROCQUE SCHOOL OF BUSINESS AND ECONOMICS

Rue d'Havré, 88 • 7000 Mons

FACULTY OF ARCHITECTURE AND URBAN PLANNING

**Avenue du Champs de Mars (Plaine de Nimy)
7000 Mons**

FACULTY OF MEDICINE AND PHARMACY
FACULTY OF SCIENCE
FACULTY OF TRANSLATION AND INTERPRETATION – EII

Rue de Houdain, 9 • 7000 Mons

FACULTY OF ENGINEERING

Place du Parc • 7000 Mons

RESEARCH INSTITUTE FOR LANGUAGE SCIENCE
AND TECHNOLOGY

Université catholique de Louvain



Boulevard Devreux, 6 • 6000 Charleroi

RECEPTION, INFORMATION AND REGISTRATION

**Rue Trieu Kaisin, 134
6061 Montignies-sur-Sambre**

FACULTY OF ECONOMIC, SOCIAL, POLITICAL SCIENCES
AND COMMUNICATION
LOUVAIN SCHOOL OF MANAGEMENT (LSM)

Chaussée de Binche, 151 • 7000 Mons

FACULTY OF ECONOMIC, SOCIAL, POLITICAL SCIENCES
AND COMMUNICATION
LOUVAIN SCHOOL OF MANAGEMENT (LSM)

Chaussée de Tournai, 7 • 7520 Tournai

RECEPTION, INFORMATION AND REGISTRATION
LOCI – FACULTY OF ARCHITECTURE, ARCHITECTURAL
ENGINEERING AND URBAN PLANNING

Université libre de Bruxelles



**Charleroi-Ville Haute • bât. Z. Gramme
Boulevard E. Solvay 31 • 6000 Charleroi**

DEPARTMENT OF LABOUR AND SOCIAL SCIENCES
MASTER IN LABOUR SCIENCES

Rue Adrienne Bolland, 8 • 6041 Gosselies

INSTITUTE FOR MOLECULAR BIOLOGY AND MEDICINE
INSTITUTE FOR MEDICAL IMMUNOLOGY
CENTRE FOR MICROSCOPY AND MOLECULAR IMAGING

Haute Ecole en Hainaut



Rue Pierre-Joseph Duménil, 4 • 7000 Mons

RECEPTION, INFORMATION AND REGISTRATION

Avenue Victor Maistriau, 13 • 7000 Mons

SOCIAL CAMPUS

Avenue Victor Maistriau, 8a • 7000 Mons

TECHNICAL CAMPUS

Boulevard Albert-Elisabeth, 2 • 7000 Mons

EDUCATION CAMPUS

Rue du Chambge, 23 • 7500 Tournai

ECONOMIC CAMPUS

Rue des Carmes, 19b • 7500 Tournai

EDUCATION CAMPUS

SOCIAL CAMPUS

Haute Ecole Louvain en Hainaut



Haute Ecole Louvain en Hainaut

Rue des Postes, 101 • 7090 Braine-le-Comte

EDUCATION CATEGORY

Grand'Rue, 185 • 6000 Charleroi

TECHNICAL CATEGORY

Rue de Bruxelles, 99-101 • 6220 Fleurus

AGRONOMICS CATEGORY

PARAMEDICAL CATEGORY

Rue de l'hôpital, 27 • 6060 Gilly

PARAMEDICAL CATEGORY

Rue Circulaire, 4 • 6041 Gosselies

EDUCATION CATEGORY

Place Brasseur, 6 • 6280 Loverval

EDUCATION CATEGORY

Rue Trieu Kaisin, 134

6061 Montignies-sur-Sambre

ECONOMIC CATEGORY

SOCIAL CATEGORY

PARAMEDICAL CATEGORY

Rue de Belle-Vue, 32 • 7100 La Louvière

ECONOMIC CATEGORY

Rue Ferrer, 159 • 7100 La Louvière

PARAMEDICAL CATEGORY

Tour Saint-Pierre, 9 • 7900 Leuze-en-Hainaut

EDUCATION CATEGORY

Chaussée de Binche, 159 • 7000 Mons

APPLIED ARTS CATEGORY

ECONOMIC CATEGORY

EDUCATION CATEGORY

SOCIAL CATEGORY

TECHNICAL CATEGORY

Rue du Couvent 82 bis • 7700 Mouscron

PARAMEDICAL CATEGORY

Rue de l'Ecorcherie, 16-20 • 7500 Tournai

SOCIAL CATEGORY

Quai des Salines, 28 • 7500 Tournai

PARAMEDICAL CATEGORY

Rue Frinoise, 12 • 7500 Tournai

TECHNICAL CATEGORY

Haute Ecole Provinciale de Hainaut-Condorcet



Rue Paul Pastur, 11 • 7800 Ath

AGRONOMICS CATEGORY

TECHNICAL CATEGORY

Boulevard Solvay, 31 • 6000 Charleroi

TECHNICAL CATEGORY

Rue de l'Espérance, 95
6061 Montignies-sur-Sambre

PARAMEDICAL CATEGORY

Square Hiernaux, 2 • 6000 Charleroi

ECONOMIC CATEGORY

Rue de la Bruyère, 151 • 6001 Marcinelle

EDUCATIONAL CATEGORY

SOCIAL CATEGORY

Rue de l'Enseignement, 14 • 7140 Morlanwelz

EDUCATIONAL CATEGORY

Chemin du Champ de Mars, 15 • 7000 Mons

ECONOMIC CATEGORY

PARAMEDICAL CATEGORY

EDUCATIONAL CATEGORY

Place de la Justice, 23 • 7700 Mouscron

ECONOMIC CATEGORY

Avenue de l'Enseignement, 45
7330 Saint-Ghislain

APPLIED ARTS CATEGORY

ECONOMIC CATEGORY

PARAMEDICAL CATEGORY

Rue Paul Pastur, 73 • 7500 Tournai

PARAMEDICAL CATEGORY

Rue Paul Pastur, 2 • 7500 Tournai

TECHNICAL CATEGORY

Rue du Progrès, 13 • 7503 Froyennes
(Negundo)

ECONOMIC CATEGORY



ARTS²

ARTS²

ÉCOLE SUPÉRIEURE DES ARTS
ACADEMY OF ARTS

Rue de Nimy, 7 • 7000 Mons

RECEPTION, INFORMATION AND REGISTRATION
MUSIC (ROYAL CONSERVATOIRE)

Rue des Soeurs Noires, 4a • 7000 Mons

PLASTIC AND VISUAL ARTS (ACADEMY OF ARTS)
THEATRE (ROYAL CONSERVATOIRE)

Académie des Beaux-Arts de Tournai



Rue de l'Hôpital Notre-Dame, 14 • 7500 Tournai

RECEPTION, INFORMATION AND REGISTRATION
PLASTIC AND VISUAL ARTS

ESA Saint-Luc Tournai



ESA Saint-Luc Tournai
es.saintluc@act.tournaibz

Chaussée de Tournai, 7 • 7520 Ramegnies-Chin

RECEPTION, INFORMATION AND REGISTRATION
PLASTIC AND VISUAL ARTS



Enseignement de Promotion sociale (Adult education)



IEPSCF d'Ath-Flobecq

Rue Carton, 5 • 7800 Ath

Institut Supérieur Plus Oultre

Rue de Savoie, 6 • 7130 Binche

Institut Provincial Supérieur des Sciences Sociales et Pédagogiques

Atelier Ferrer • Boulevard Gustave Rouiller, 1
6000 Charleroi

Université du Travail – Institut d'Enseignement Technique Commercial

Square Hiernaux, 2 • 6000 Charleroi

Institut Supérieur Industriel

Boulevard Solvay, 31 • 6000 Charleroi

Collège Technique "Aumôniers du travail"

Grand Rue, 185 • 6000 Charleroi

Ecole des Femmes Prévoyantes Socialistes (FPS)

Avenue des Alliés, 2 • 6000 Charleroi

Cours Industriels et Commerciaux de Couillet

Rue des Lilas, 3 • 6010 Couillet

Centre d'Enseignement Supérieur pour Adultes (CESA)

Rue de Courcelles, 10 • 6044 Roux

IEPSCF de Colfontaine

Rue Clémenceau, 60-62 • 7340 Wasmes

IEPSCF de Dour

Rue de Boussu, 84 • 7370 Dour

Les Cours Industriels et Commerciaux d'Ecaussinnes

Rue Ernest Martel, 6 • 7190 Ecaussinnes-D'Enghien

Enseignement de Promotion Sociale d'Enghien (EPSE)

Rue du village, 50 • 7850 Marcq

Arts et Métiers Enseignement Promotion Sociale (AMEPS)

Rue Sainte Thérèse, 47 • 6560 Erquelines

IEPSCF de Frameries

Rue du Onze Novembre, 2 • 7080 Frameries

Institut Provincial des Arts et Métiers du Centre

Rue Paul Pastur, 1 • 7100 La Louvière

Institut Provincial d'Enseignement de Promotion Sociale du Hainaut Occidental

Rue Paul Pastur, 49 - 7900 Leuze-en-Hainaut

PROMSOC Mons-Borinage

Avenue du Tir, 10 • 7000 Mons

Institut Reine Astrid de Mons (IRAM)

Rue de Saint-Luc, 3 • 7000 Mons
Chaussée de Binche, 159 • 7000 Mons

IEPSCF de Jemappes-Quiévrain

Avenue Roi Albert, 643 • 7012 Jemappes

IEPSCF de Morlanwelz-Mariemont

Rue Raoul Warocqué, 46
7140 Morlanwelz-Mariemont

IEPSCF de Mouscron-Comines

Place de la Justice, 1 Bte 155 • 7700 Mouscron

Collège Technique Saint-Henri

Avenue Royale, 50/B • 7700 Mouscron

IEPSCF de Peruwelz

Boulevard Léopold III, 40 • 7600 Péruwelz

IEPSCF de Sivry-Rance

Rue Pauline Hubert 40 Bte 2 • 6470 Rance

**Institut Technique et agricole
de la Province de Hainaut**

Rue de la Station, 57 • 7060 Soignies

IEPSCF de Thuin

Grand'Rue 52 • 6530 Thuin

IEPSCF de Tournai-Antoing-Templeuve

Rue Saint-Brice, 53 • 7500 Tournai





Université de Mons (UMONS)

SIÈGE SOCIAL : Place du Parc, 20 • 7000 Mons • +32 (0)65 37 31 11 •
 info.mons@umons.ac.be • www.umons.ac.be

AUTRE SITE DANS LE HAINAUT : Bd Joseph II, 38-42 • 6000 Charleroi • +32 (0)71 89 91 17 •
 info.charleroi@umons.ac.be • www.umons.ac.be



Université catholique de Louvain (UCL)

SIÈGE SOCIAL : Place de l'Université, 1 • 1348 Louvain-la-Neuve • www.uclouvain.be

DANS LE HAINAUT : Ch. de Binche, 151 • 7000 Mons • +32 (0)65 32 33 27 •

info.etudes@uclouvain-mons.be • www.uclouvain.be/mons

Maison Georges Lemaître • Bd Devreux, 6 • 6000 Charleroi • +32 (0)71 20 25 00 •

info-charleroi@uclouvain.be • www.uclouvain.be/charleroi

Ch. de Tournai, 7 • 7520 Tournai (Ramegnies-Chin) • +32 (0)69 25 03 22 •

loci-tournai@uclouvain.be • www.uclouvain.be/tournai



Université libre de Bruxelles (ULB)

SIÈGE SOCIAL : Avenue F. Roosevelt, 50 • 1050 Bruxelles • www.ulb.ac.be

DANS LE HAINAUT : Boulevard E. Solvay, 31 • 6000 Charleroi • +32 (0)2 650 36 36 •
 etudes@ulb.ac.be • www.ulb.ac.be/ulb/presentation/ulb-en-wallonie.html



Haute Ecole en Hainaut

Rue Pierre-Joseph Duménil, 4 • 7000 Mons • +32 (0)65 34 79 83
 info@heh.be • relations.internationales@heh.be • www.heh.be



Haute Ecole Louvain en Hainaut

Chaussée de Binche, 159 • 7000 Mons • +32 (0)65 40 41 41
 info@helha.be • www.helha.be



Haute Ecole Provinciale de Hainaut-Condorcet

Chemin du Champ de Mars, 17 • 7000 Mons • +32 (0)65 40 12 20
 info@condorcet.be • www.condorcet.be



ARTS²

Rue de Nimy, 7 • 7000 Mons • +32 (0)65 35 60 80
 info@artsaucarre.be • www.artsaucarre.be



Académie des Beaux-Arts de la Ville de Tournai

Rue de l'Hôpital Notre-Dame, 14 • 7500 Tournai • +32 (0)69 84 12 63
 academie.secretariat@skynet.be • www.actournai.be



ESA Saint-Luc

Chaussée de Tournai, 7 • 7520 Ramegnies-Chin • +32 (0)69 25 03 66
 Direction-esa@saintluc.tournai.be • www.stluc-sup-tournai.be



www.polehainuyer.be > Partner institutions > Adult education Colleges (adult education – EPS)

